

**Women's
Panhellenic
Recruitment:
Guide and FAQs
Spring 2021**

PRIMARY PANHELLENIC RECRUITMENT

2021 POTENTIAL NEW MEMBER GUIDE

Dear PNM,

On behalf of the Women's Panhellenic Association, we would like to be the first to introduce you to Panhellenic Life and Recruitment at WashU. Joining a Panhellenic chapter is a great way to get involved at WashU, find your place in the greater WashU community, and create lifelong connections. The WashU Panhellenic community seeks to build leaders through experiences in sisterhood, scholarship, philanthropy, and social enrichment. We hope to help you find your home through participation in Primary Panhellenic Recruitment!

This guide will help you better understand what the Women's Panhellenic Association is and how our recruitment process works. In addition, you will be introduced to chapters and individual women who make up our community. If you have further questions, check out our website and social media accounts listed to the left on the following page! We hope to see you during Recruitment 2021 and can't wait to help you find your home

We created this year's recruitment with reform at the forefront, and we believe this is our opportunity to show you how we are creating change in our chapters, in our National Orders, and in the WashU community. We published a detailed post on our Instagram account (@washu_panhel) that touches on many of the changes that have been made and that we plan to make in the coming months. These changes to our organizations and to WPA do not negate the harm we have caused BIPOC and marginalized groups. We deeply apologize for the harm we have caused, and we pledge to do better and hold each other accountable.

It is on this note that we would like to emphasize that by joining a WPA sorority this Spring, you are making a commitment. Not only are you committing to membership, but you are also committing to being an active part of Greek Life reform. Change begins with us, and by joining our community you are joining this change.

We are looking forward to meeting each and every one of you, and we cannot wait to see our community grow. Should you have any questions, comments, or concerns, please email panhell@su.wustl.edu, fill out the form in our Instagram bio, contact Campus Life, or DM us on Instagram.

Sincerely,
Your WPA Representatives

What is the WPA?

The Women's Panhellenic Association (WPA) is a governing body made up of an Executive Board and one delegate from each chapter.

Current WPA Chapters

ALPHA EPSILON PHI
@aephiwashu

ALPHA PHI
@alphaphiwashu

CHI OMEGA
@washuchiomega

DELTA GAMMA
@deltagamma_wustl

GAMMA PHI BETA
@washugammaphi

KAPPA DELTA
@kappadeltawashu

KAPPA KAPPA GAMMA
@kkgwustl

Panhellenic Creed

We, the Panhellenic women of Washington University, strive for high ideals, good scholarship, and serving our community to the best of our ability. We, as unified sorority women, stand for development of character inspired by the deep friendship of individual sorority and greater Panhellenic life. We recognize that we are not only part of our individual sororities but the larger Panhellenic community and work to further the ideals and values these communities represent.

Our Mission

The Women's Panhellenic Association is the governing body of the nine Panhellenic chapters on campus. Our goal is to act with integrity while upholding the values of Arête. Our community uses Arête, the Greek word for "virtue," as an all-encompassing term for all of our chapters' values. These values include scholarship, service, sisterhood, leadership, and support.

Arête

Based on the ideals of our creed and mission, we strive for Arête. This word, special to the WashU WPA, epitomizes striving for excellence and nobility in all dimensions of character. It is integrity. It is individuality. It is loyalty to your chapter and the fraternity/sorority community as a whole. It is honoring rituals established by founders and setting examples for future members. It is commitment to improve the world in which we live. It is intellectual curiosity. It is social responsibility. It is being a supportive friend and sister. It is by this ideal that we live.

TERMS TO KNOW

active a fully-initiated undergraduate member of a sorority chapter

alumna (singular) an initiated member of a panhellenic sorority who is no longer in college

bid an invitation to join a chapter

big/little during your new member period you are paired with a woman who acts as a mentor and friend; big/little comes from "big sister" and "little sister"

chapter the local collegiate group of an inter/national fraternity or sorority; alternate definition is the weekly meeting of a given organization

initiation the formal ceremony that brings a new member to full sorority membership

legacy a potential new member whose relative is an alumna or active member of a particular organization; each organization has different regulations when it comes to legacies, and legacy status does not guarantee a bid to membership

new member a member who has accepted a bid to a chapter but has not yet participated in an initiation ceremony

new member educator the active(s) serving as the liaison between new members and active members of a chapter; they are responsible for leading the new member period and preparing new members for initiation

new member period a time during which new members learn about the values of their organization and the expectations of membership, as well as meet active members of the chapter

panhellenic association the governing body of a specific group of sororities on Wash U's campus, comprised of the executive board and one delegate from each chapter

philanthropy the charitable arm of individual chapters; each chapter has a designated organization for which they raise money

potential new member (PNM) person who has interest in sorority life and participates in the recruitment process

recommendation a letter written by an alumna recommending a woman for membership in a specific sorority

Continuous Open Bidding (COB) an informally structured recruitment in which chapters individually plan and host events for PNMs

open event a recruitment event that is open for any PNM to attend

closed event a recruitment event that a PNM may attend by invite only

GREEK ALPHABET

alpha
(al-fuh)

beta
(bay-tuh)

gamma
(gam-uh)

delta
(del-tuh)

epsilon
(ep-si-lon)

zeta
(zay-tuh)

eta
(ay-tuh)

theta
(thay-tuh)

iota
(eye-o-tuh)

kappa
(cap-uh)

lambda
(lamb-duh)

mu
(mew)

nu
(new)

xi
(zye)

omicron
(om-e-cron)

pi
(pie)

rho
(row)

sigma
(sig-muh)

tau
(t-ow)

upsilon
(oop-si-lon)

phi
(fie / fee)

chi
(kie)

psi
(sigh)

omega
(oh-mega)

RECRUITMENT STRUCTURE 2021

DATES TO KNOW

INFORMATIONAL PANHELLENIC PANEL - REQUIRED!

SUNDAY, FEBRUARY 7TH @ 1PM

COB EVENTS BEGIN

WEDNESDAY, FEBRUARY 10TH

1ST PHASE OF COB ENDS

FRIDAY, MARCH 5TH

1ST ROUND OF BIDS EXTENDED

MONDAY, MARCH 8TH

1ST PHASE OF BIDS ACCEPTED / COB PHASE 2 BEGINS

TUESDAY, MARCH 9TH

Panel

Recruitment will begin with a panel featuring a representative from each chapter in the Women's Panhellenic Association (WPA) on Sunday, February 7th at 1pm CST. The panel will make space to hear from each chapter, to share about changes being made to this year's recruitment, and to answer your questions about sorority life and recruitment. Attendance is required in order to participate in Recruitment 2021. There will be a make-up option if you cannot attend this panel. Please email panhell@su.wustl.edu for more information.

RECRUITMENT STRUCTURE CONT.

Continuous Ongoing Bidding (COB) Process

WPA will be using an informal Continuous Ongoing Bidding (COB) structure for recruitment this semester. This means that each sorority will have the freedom to schedule the individual dates, times, lengths, and focus of conversations for their recruitment events. Potential New Members (PNMs) can choose which sororities' events they wish to attend. Sororities will be hosting open events, which any PNMs are welcome to attend, and closed events, where a PNM must receive an invitation from the chapter to attend. COB events will begin Wednesday, February 10th and all events will occur online. It is highly encouraged that PNMs attend events from all sororities and keep an open mind to learn enough about each chapter to make informed decisions and maximize their options.

Bid Extension

On Monday, March 8th, sororities will send out their first phase of bids to PNMs. PNMs may receive multiple bids from different sororities, and in this case, they can choose which bid they would like to accept. PNMs are not guaranteed to receive bids, and it is likely that some PNMs will not receive any bids on this date. However, this is not the end of COB and does not mean that you will not be able to join a sorority! After these initial bids are sent out, sororities will continue their COB process throughout the semester and continue extending bids.

Apparel

Apparel is not specified and is an individual choice through which PNMs can express themselves. PNMs should not feel the need to purchase any new attire for recruitment.

Fees

Recruitment will be held at no cost to PNMs or active members, which includes no registration fees. After joining a sorority, each chapter has dues that all members must pay each semester that differ depending on the sorority and their financial needs.

Events

All events will be held online and it is up to each individual sorority to structure their own events. Each chapter will be able to choose the individual dates, times, lengths, and focus of conversations for their recruitment events. PNMs will be able to attend any open event they would like. Chapters will then extend invites to closed events. We highly recommend attending as many open events as possible. This will allow you to explore as many chapters as possible as well as increase your chances of receiving a bid.

MUTUAL SELECTION PROCESS

Recruitment is a **mutual selection process** that balances the preferences of each potential new member with those of the existing Panhellenic sorority chapters. The Panhellenic Association strives to allow every woman an opportunity to find a sorority that best suits their personality, interests, and future goals, while providing an organized and unbiased membership selection process for the chapters.

Invitations are only guaranteed to potential new members for **open events**. There is **no guarantee** that a PNM will be invited to attend any closed events as invitations to closed events are made based on the selections of the chapters.

Additionally, there is no guarantee that a woman will receive a bid to any sorority. However, the COB process will not end until every chapter fills their pledge class. After the first round of COB, chapters will be still recruiting new members. A PNM can receive a bid **at any point** after the first round of bid acceptance.

There is no specific formula that explains why a woman is released from a particular chapter, or why a woman prefers one chapter more than another. The Panhellenic Association makes every effort to allow each potential new member the best opportunity to join a sorority, but there are no guarantees that a woman will be placed within a specific sorority. It is important to **keep an open mind** during recruitment week and to use the time to meet and make new friends! It is for this reason that we encourage you to attend as many open and closed events as possible.

FREQUENTLY ASKED QUESTIONS

What should I talk about during recruitment parties?

It is important to be yourself and allow the conversation to develop naturally! Just as you are presenting yourself to chapters, chapters are presenting themselves to you. Therefore, it is important to ask questions that allow you to make comparisons and decisions.

What attire should I wear for recruitment?

There is no mandated attire for recruitment; wear whatever is most comfortable for you! Potential new members are not expected to buy any new clothes or outfits for recruitment.

What if I am shy?

Some of the sisters in each chapter are as nervous to talk with you as you are to talk with them. Every member of a sorority contributes her individual talents to the sisterhood and chapters want members with a variety of personalities. There is no reason to feel insecure when speaking with sisters. Sororities want to impress you as much as you want to impress them!

I am a legacy to a sorority. Is there anything special I should know?

Every chapter handles legacies differently - some chapters no longer abide by their past legacy policy while others do take it into account. During the WPA Recruitment Panel on February 7th, sororities will be outlining their legacy policies.

Do I need letters of recommendation prior to recruitment?

The chapters at WashU do not require recommendations from alumnae prior to meeting you during recruitment, and each chapter has different policies on whether they will accept the letters or not. During the WPA Recruitment Panel on February 7th, sororities will be outlining their policies on letters of recommendation..

I've heard some sororities have different reputations. How should I handle that information?

The only opinion of each chapter that should affect your decision is yours. Chapters vary from campus to campus and from year to year depending on membership. If you allow someone else's perceptions to influence you, you may not be satisfied with your choice in a sorority. Each chapter is made up of women with a range of personalities and qualities. If you hear any derogatory remarks about a particular chapter or sisters, we ask you to please inform WPA via our feedback form and to disregard them.

What are the required dues for each sorority?

Due to the unprecedented Covid-19 pandemic, many sororities have greatly reduced their dues to align with the lack of in-person experience provided. Thus, each sorority has a different number of dues required for Spring 2021, which will be indicated during the recruitment process.

FREQUENTLY ASKED QUESTIONS

What does virtual Greek Life look like?

The sororities have all been working to foster a tight-knit sisterhood, even during the Covid-19 pandemic. There have been virtual sisterhood events offered throughout the Fall semester, and sisters are encouraged to get together in small groups while abiding by the Covid-19 restrictions WashU has put in place. We look forward to offering more in-person events in the future once the Covid-19 restrictions are lifted and we can gather safely.

Can I attend multiple open and closed events for different sororities?

Yes you can! It is recommended that you attend as many open and closed events as you can, for all the sororities. Whether or not you have your mind set on specific chapters prior to rush, it is important to meet people from each sorority and expand your horizon as much as possible.

What happens if I receive multiple bids?

If you receive multiple bids, meaning that more than one sorority is offering you a chance to be part of their chapter, it is your choice as the potential new member which bid to accept.

What happens if I don't get a bid?

Many sororities will still be looking to take in more women after this initial round of recruitment is finished. Therefore, the COB process will be continuing throughout the rest of the Spring semester. Post-recruitment, keep an eye out for announcements from the different sororities about their continuation of the COB process.

Who can I reach out to for questions or concerns about Panhellenic Recruitment, the COB process, WPA, or the general recruitment experience?

There is a google form in the bio of the Instagram @washu_panhel and on the last page of this document. In this form, you can ask questions or voice concerns. A member of WPA will get back to you as soon as possible through your preferred method of contact.

MEET THE

ΑΕΦ ΔΓ

ΑΦ ΓΦΒ

ΧΩ ΚΔ

ΚΚΓ

CHAPTERS

A E Φ

alpha epsilon phi

Nickname AEPHi

Colors Green & White

Symbols Giraffe & Pearl

Philanthropy Sharsheret & Elizabeth

Glaser Pediatric AIDS Foundation

Instagram @aephiwashu

● AEPHi was founded in 1909 by a group of seven women who felt that they had no place to call their own. Since then, the mission of AEPHi has been “to inspire and support exemplary women dedicated to friendship and a lifelong commitment to Alpha Epsilon Phi while building on the vision of our Jewish founders.” “Above all else, Alpha Epsilon Phi inspires exemplary women who are: enriched by sisterhood and unconditional friendships, dedicated to selfless service and inspiring others, and committed to intellectual growth and personal development.”

● We are so excited to meet all of you so soon, and we cannot wait to welcome a new group of incredible people to our wonderful community!

How have you grown since membership?

"I think I am in some ways a totally different person than when I joined AEPHi. I've matured and learned so much from my sisters and my overall experience in Greek Life. I had the opportunity to pursue leadership and make real change in the world, and that is something that I know will stick with me for life! I've learned how to be a good sister, how to listen, how to learn, and how to work towards the things I strive for in life. I have also learned to reflect and I am really grateful for the personal growth I have made as a result of my involvement with AEPHi!"

What has AEPHi given you?

"AEPHi has given me so much. It goes way beyond just lifelong friendships. For me, AEPHi has given me an entire community of people that will support me unconditionally, challenge me when I need it, and are there for me no matter what. I have formed bonds that I never thought could be so strong, and I will hold those relationships close to my heart for the rest of my life! AEPHi also gave me the opportunity to be a leader. I learned life skills that are incredibly valuable and I feel so well prepared for life after college as a result of that involvement. My participation with other Greek chapters has also been one of my most valued experiences during my time at WashU because of everything I learned. I think that Greek Life in general gives so many opportunities to make change and it has been a highlight of my last four years!"

Favorite memory?

"I think my favorite memory is probably all of the new member period in 2019. I had the honor of serving as my chapter's president that year, and because of that I was really involved with the new member class. Getting to know over 40 new people on such a personal level was not only a unique experience, it was so much fun. I got to form a connection with everyone individually and as much as they leaned on me, I also leaned on them. I grew so close with so many of those members and those friendships are definitely some of the ones I hold closest to me. I loved getting to meet new people knowing that we already shared some things in common because we were all in AEPHi. It's a time I think about a lot, and I wish I could relive it!"



alpha epsilon phi



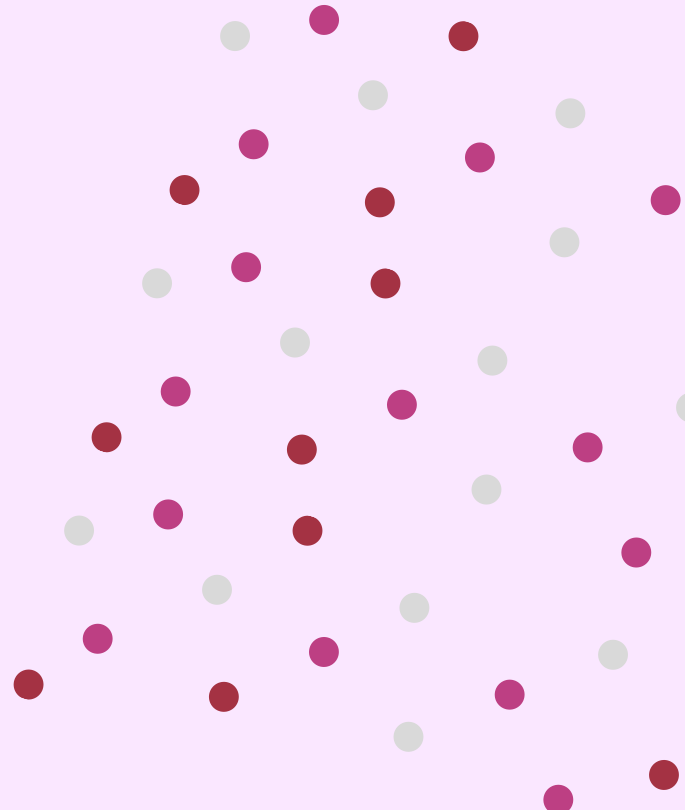
Nickname APhi

Colors Silver & Bordeaux

Symbol Ivy Leaf

Philanthropy Women's Heart Health

Instagram @alphaphiwashu



Alpha Phi is more than just an organization; it's a community of empowered women supporting one another at WashU and beyond. Our sisterhood stretches across the United States and Canada with 173 collegiate chapters! Alpha Phi is made up of so many individual, amazing women, united with common ideals - generosity, passion, kindness, and a drive for change. Being part of Alpha Phi means being part of a sisterhood and a community, made up of well rounded individuals who will push you to be your best self, support your values and goals, and be there for you no matter what. We are so, so excited to welcome in a new pledge class of independent, genuine, and caring women, and can't wait to meet you all!



Why Alpha Phi?

"Throughout my recruitment process, Alpha Phi consistently stood out to me. The conversations I had with the members were so friendly and welcoming, and over time I felt like I got to know them so well and that they truly cared about my experience."

"So many different people I talked with explained how they had been able to find a real sense of community with this group of incredible women, and that Alpha Phi was a chapter in which people were comfortable being themselves and could also come together over shared values and goals. The sisters were so accepting of each other, and created such a supportive and fun environment that I knew Aphi was something I wanted to be a part of."

What's your favorite memory from Alpha Phi?

One Alpha Phi event which will forever stand out to me is our tradition of Candle Pass, in which members of the new pledge class share things about their lives that have made them who they are. Through this event I got to know my new sisters in such a meaningful and personal way. Hearing about things they've gone through gave me such a better understanding of each of them, and was such a good opportunity for us to come together and support each other. I felt so connected to them after this event, and it's something I'll never forget.

What has Alpha Phi given to you?

"Alpha Phi has given me the opportunity to meet so many down-to-earth and charismatic women. It gave me a community of friends who not only accepted me, but constantly motivated me to be my best self. I came into my sorority timid, nervous and eager to make friends. Alpha Phi's many sisterhood events allowed me to open up to fellow Phi's in an authentic and genuine way. Aphi does a great job of giving you opportunities to have fun, while also making life long friends. "





Nickname Chi O

Chapter Name Tau Mu

Colors Cardinal & Straw

Symbols Skull and Crossbones & Owl

Philanthropy Make a Wish

Foundation

Instagram @washuchiomega

Chi Omega is the largest women's fraternal organization (375,000 !!!) and is guided by the values of our *Symphony*. Written in 1904 by a New Member at Northwestern University, the *Symphony* declares that we place “character before appearances”, that we are “democratic rather than exclusive”, and that we “work earnestly, speak kindly, act sincerely, and choose thoughtfully.” Most importantly, we are to be “womanly always, discouraged never.” **These are our values.** We cherish intentional Sisterhood inspired by service to others, genuine kindness, and personal integrity. We want to “serve the world while keeping Chi Omega ever at heart” and inspire authentic connection with our Sisters. And... we are SO excited to meet all of you!!!

What has Chi O given to you?

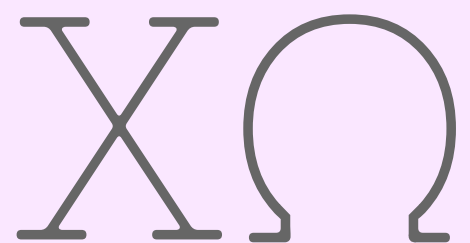
"ChiO has given me a group of friends, mentors, and roommates(!) who I can talk to about everything from ice cream to love to the meaning of life. I have made lifelong friends in Chi O who push me to be my best self, and give me the strength to grow and push them too."

How have you grown since membership? "Since joining Chi O, I've gained so much confidence in myself. I've grown into the person I was meant to be and have learned how to be the most honest, humble, authentic, compassionate, respectful version of myself. I've grown into someone my freshmen year self would want to be in her future."

Why Chi O?

"Chi O means a supportive community of empowered women who will be there for you always. It means inclusion, safety, and genuine work to make the world a better place. It means love, joy, mutual respect, and kindness. Chi O means Sisterhood."

"I chose ChiO because the women that I met were genuine, confident, impressive, and caring. They weren't afraid to be themselves, and loved each other for who they truly are. During recruitment, they were having so much fun together and clearly made each others' lives better, and that's exactly what I found when I joined ChiO!"



chi omega



delta gamma

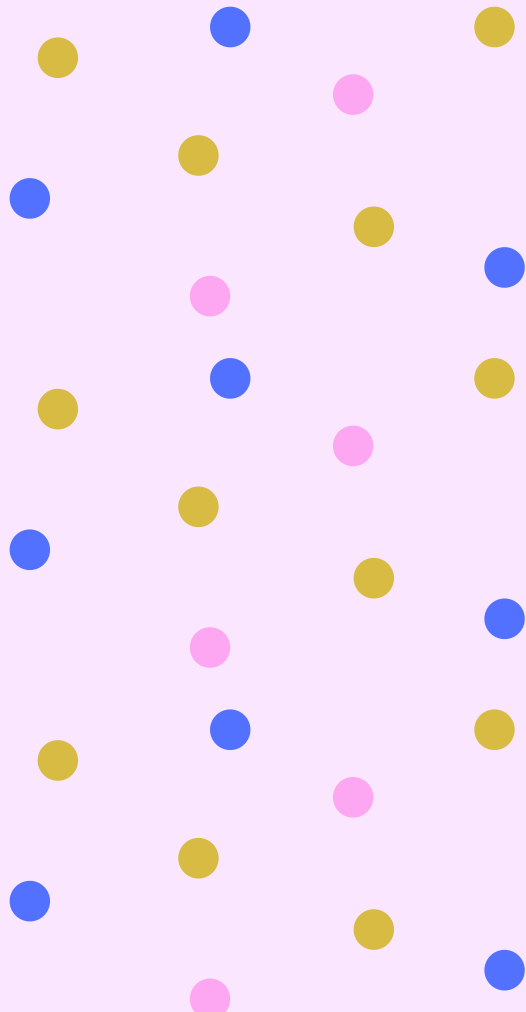
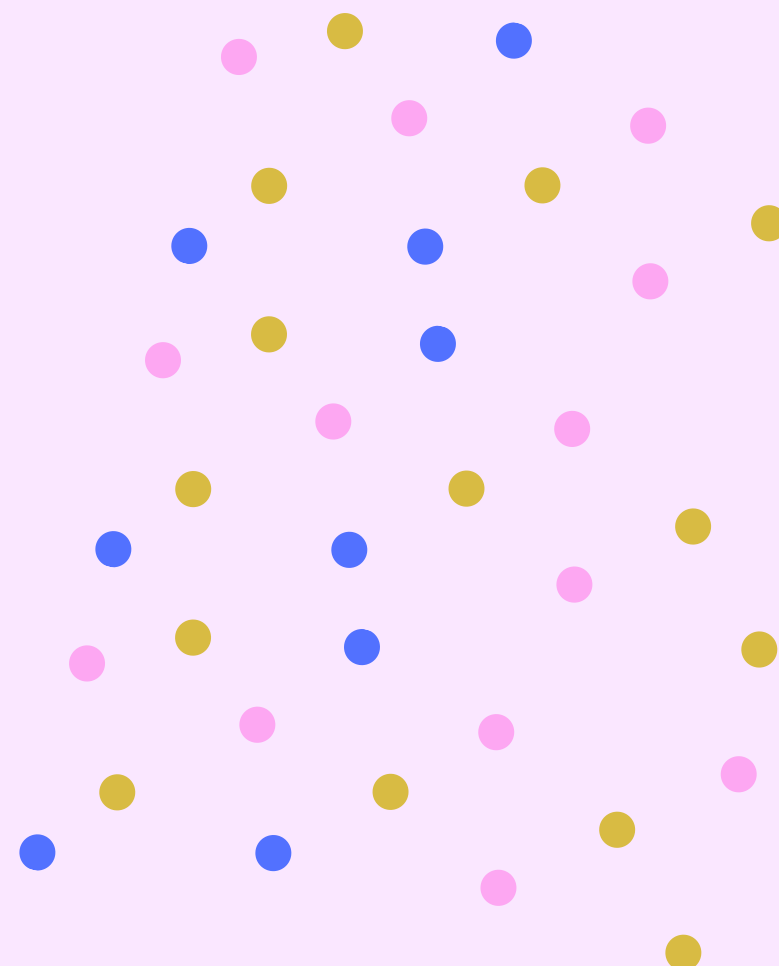
Nickname DG

Color Bronze, Pink, & Blue

Symbols Anchor

Philanthropy Service for Sight

Instagram @deltagamma_wustl



Delta Gamma was founded in 1873 by three young women and has since then worked to create a space for women across 150 collegiate chapters. Delta Gamma has the motto "**Do Good**" which emphasizes how our organization empowers and lifts up our sisters to do the work that creates lasting changes in our community. Delta Gamma works to bring together passionate and strong women from all backgrounds. Joining Delta Gamma means joining a network of over 250,000 members. These women are always there to support you and build meaningful connections for life. We cannot wait to meet you all and learn more about you.

What has Delta Gamma given you?

When I first came to WashU I did not feel like I had my place on campus. I was unsure of recruitment, but after attending an SOC event I knew that I wanted to rush. Within the first few days of rush I knew DG was the place for me. Each member has their own talents and aspirations and it is so inspiring to be surrounded by such passionate women. I immediately met women that I can say have become my closest friends at WashU. I currently live with one of my sisters and I could not be more grateful for this sisterhood.

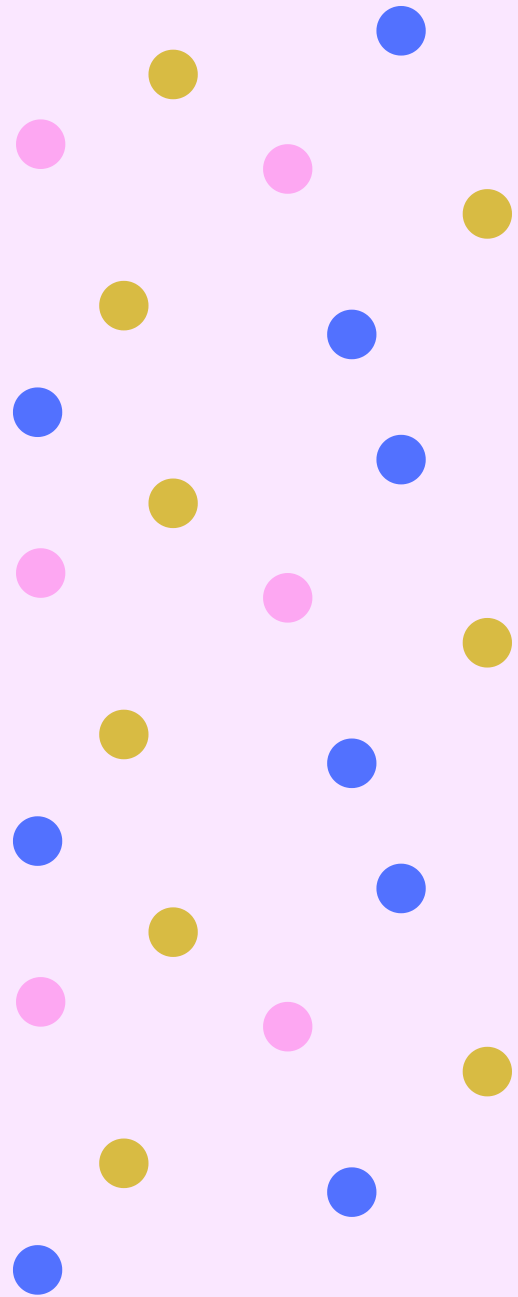
Funniest experience?

I remember during the new member period I had a Pi Alpha date and we decided to go as a big group to a "fancy restaurant," but the actives surprised us with an upscale dinner in the Village with our own name cards and everything. It was just so funny how they had fooled all of us and made even us new members feel so comfortable around them.

How have you grown since membership?

When I first joined DG I did not imagine myself being president. When the opportunity was offered to me I was a little overwhelmed and scared. Now, I am so grateful to be leading such strong and amazing women and I am very excited where for the new beginning recruitment will bring to our chapter.

-Adrianna PC '20



delta gamma

ΓΦΒ

gamma phi beta

Nickname GPhi / Gamma Phi

Colors Brown, Mode, & Pink

Symbol Crescent Moon

Philanthropy Building Strong Girls & Girls on the Run

Instagram @washugammaphi

Gamma Phi Beta Sorority, one of the 10 oldest women's organizations in North America and the first to be called a "sorority," focuses on building confident women of character who celebrate sisterhood and make a difference in the world around us. We are guided by our motto, "founded on a rock," as the rock is the firmest and most enduring substance, able to withstand the ravishes of time, and offer the strongest protection. The numerous women in Gamma Phi Beta, and our various identities which soar, dance, twist and turn, create a community filled with authenticity, kindness, and lots of laughs. Our cheeks hurt from smiling at the thought of getting to meet you all - we cannot wait!

Favorite Gamma Phi Beta memory?

"Getting a chance to hang out with my pledge class once a week, either on zoom or socially distanced on art hill! Even in these stressful times, having an hour spent with my sisters has given us a great avenue to relax and become closer with one another."

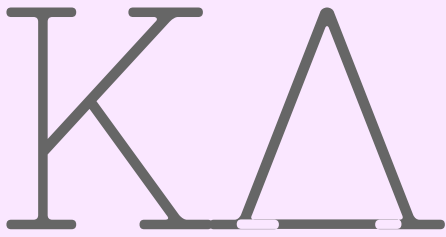
Most valuable lesson learned since joining Gamma Phi Beta?

"I have learned that by using our platform and being outspoken, we are able to be heard, and influence positive change at the highest level. Our sisters are passionate and strong-willed. We are proud that GPhi International Headquarters wholeheartedly supports our reform efforts and is actively listening, doing their part to create a more educated, inclusive, and equitable community. We encourage you to check out our Instagram post as well as the link in our bio @washugammaphi to learn more about what the sisters in our chapter have been able to accomplish on a national level."

Why Gamma Phi Beta?

"I was drawn to the Phi Chapter because it is filled with extraordinary women who are so warm and welcoming, and never fail to make me laugh. I always feel valued for who I am on the inside and am able to be my most genuine self around my sisters."





kappa delta

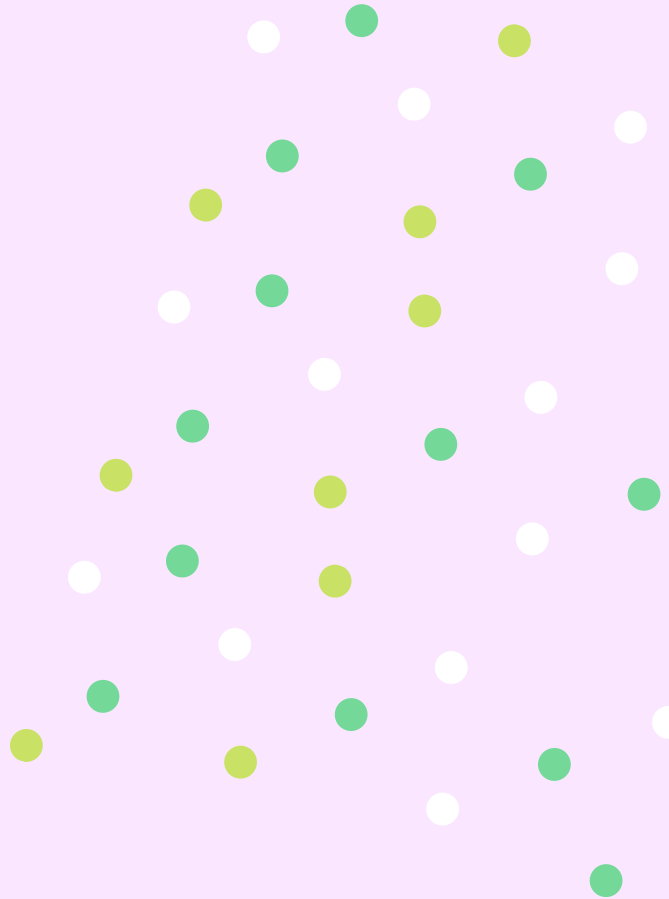
Nickname KD

Colors Olive Green & Pearl White

Symbol Dagger

Philanthropy Girl Scouts of the USA &
Prevent Child Abuse America

Instagram @kappadeltawashu



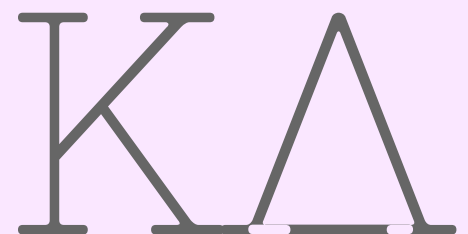
Ta Kala Diokomen. Kappa Deltas strive for that which is honorable, beautiful and highest and what is more honorable, beautiful and important than friendship? We are a group of women who are united in friendship, community service and women's empowerment. We value truth, honor and duty to your community. As sisters, we work to empower girls and women through fostering a community through philanthropic endeavours, supporting local charitable organizations and hosting events for local Girl Scouts. Kappa Deltas share life together. Not only are we sisters; we are friends, study-buddies, and an extensive network of women across the country. Check out our instagram @kappadeltawashu for more information on our reform and sisterhood!

What has KD given to you?

"Kappa Delta has given me a family away from home. I did not meet many people my freshman fall, and then I rushed. I was so excited to receive a bid from KD because whenever I talked to the sisters they were so genuine and kind. I found my family-away-from-home. Some of my closest friends are Kaydees. It is such a great group of people. Right after Bid Day, my pledge class and I were welcomed into the family. Girls would save tables at Whispers and the Law Cafe for lunch and studying and host movie nights. It did not matter if I was stressed or happy, my sisters have been there for me, offering meal points, class advice or scheduling a boba tea run. My Kappa Delta family has given me more love, support and fun memories than I could hope for. They are my family!" --Tori

Why KD?

"All through highschool I played sports. Although I knew I didn't want to continue my athletic career in college, I began to miss the relationships I had with upperclassmen on my team in highschool. During recruitment I finally began to feel the same familiar "team" environment that I had missed without sports, specifically with Kappa Delta. Each sister seemed genuinely interested in my life and offered genuinely helpful advice about school, recruitment and life. I felt so welcomed and cared for that, despite the stresses and disappointments of recruitment, I knew Kappa Delta was my home!" --Molly



kappa delta

KKKΓ

kappa kappa gamma

Nickname KKG / Kappa

Chapter Name Gamma Iota

Colors Dark Blue & Light Blue

Symbols Key, Fleur-De-Lis, & Owl

Philanthropy Reading is Fundamental

Instagram @kkgwustl

“Dream boldly. Live fully.” It is by this motto that we operate in Kappa Kappa Gamma, continuously driving at our passions and expanding our knowledge. Our sisters are bound by friendship, mutual support, self-growth, and an allegiance to ethical principles, and we strive to develop and carry these values with us beyond our undergraduate years. We always aim to be better than we were yesterday, and we use the support of our sisters to achieve this goal. 2021 marks 100 years of the Gamma Iota chapter of KKG, and we are thrilled at the prospect of spending this momentous year with you! To learn more about our values and sisterhood, check out our Instagram and attend our first open house event!

Funniest memory?

Finding out my best friend and I were twins at Big-Little reveal! Since we're teammates and roommates with the same name, everyone has joked that we're the same person. What made everything funnier was that we didn't even realize we were twins at reveal! Ultimately being in the same Kappa family made us even closer, and I wouldn't trade that experience or our amazing big for the world! - Rachel M., PC '20

A sister who inspires you?

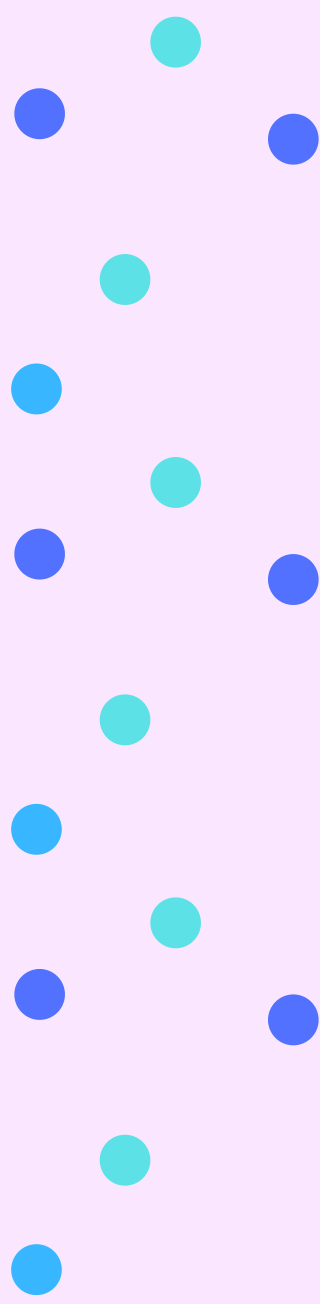
Rachel Cohen! She is the most kindhearted, compassionate person I've ever met and is always thinking of others. Without a doubt, she puts a smile on my face everyday and truly lives her life making people laugh and happy. She's so intelligent and is one of the hardest workers I know, and I'm beyond lucky to have her as my Kappa sister. - Lindsay L., PC '20

What has KKG given to you?

Being a part of Kappa gave me the feeling that I'm right where I'm supposed to be, which can be pretty hard to find in college. Each member brings their own talents and ideas to the table, and I have the privilege of calling each of them a sister. When you're surrounded by hardworking, driven, and intelligent women, you want to be that too. And because of Kappa, I've found people that I can proudly call some of my best friends in not only college, but also in life. - Faith L., PC '20

Why KKG?

It was the 2nd day of recruitment when Kappa became "it" for me. The energy in the room was incredible, with love and happiness bouncing off every member. It felt as though the women were my biggest cheerleaders before they even knew me. Equally as important as why I chose Kappa, though, is why I continue to love it. For me, it's the little things like a sister's late-night sprint across campus to bring me Advil or the countless waves I receive on every walk to class. Kappa gives me my community on campus, and during recruitment, I could feel the KKG community and passion spread across the room and into me. - Roberta W., PC '19



KKK

kappa kappa gamma

HELPFUL LINKS

**Questions
for 2/7
panel**



**Questions about
COB, recruitment,
Panhellenic
experience, etc.**



**Recruitment
Registration**



**WPA General
Concerns**

